

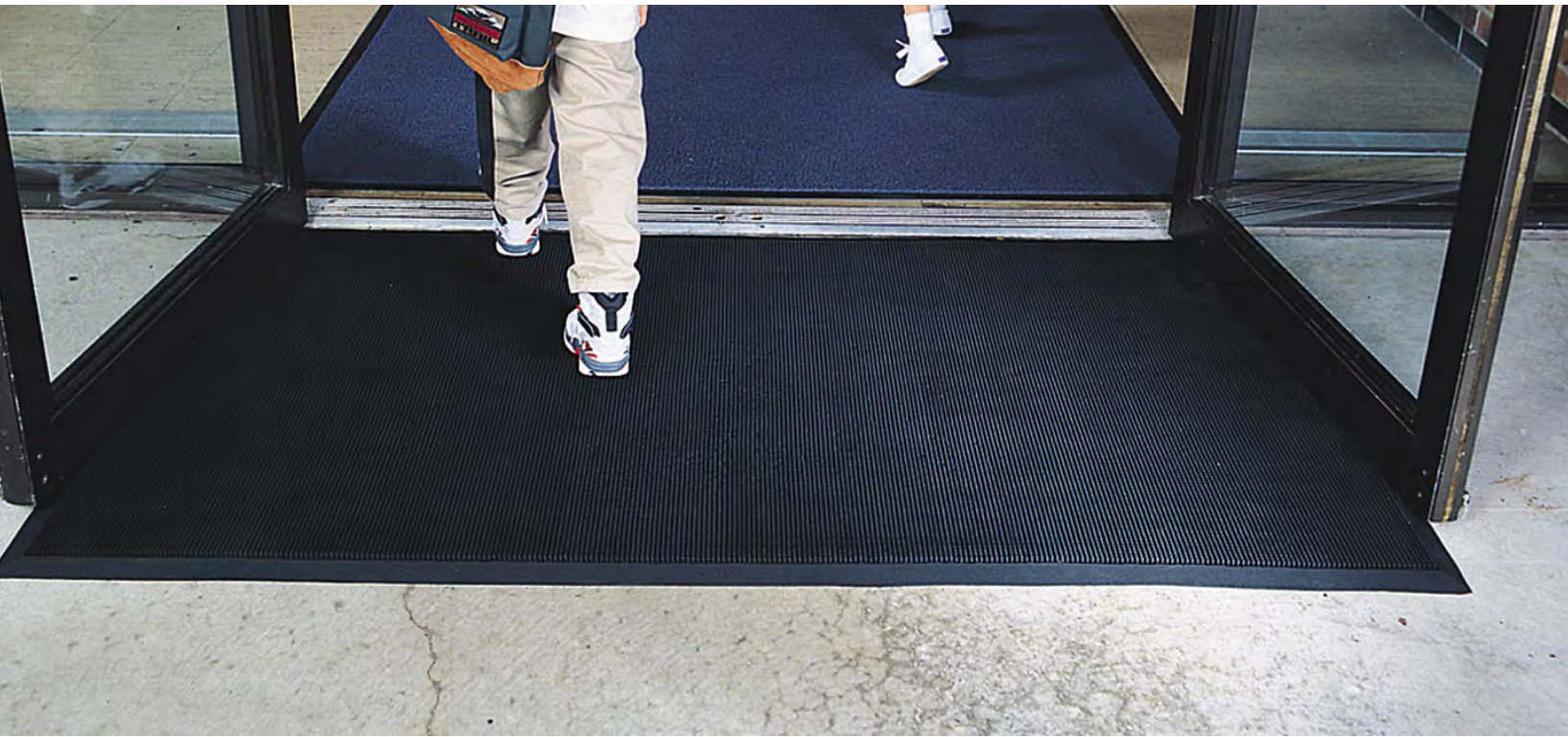


Justrite Safety Group

345 - RUBBER BRUSH™

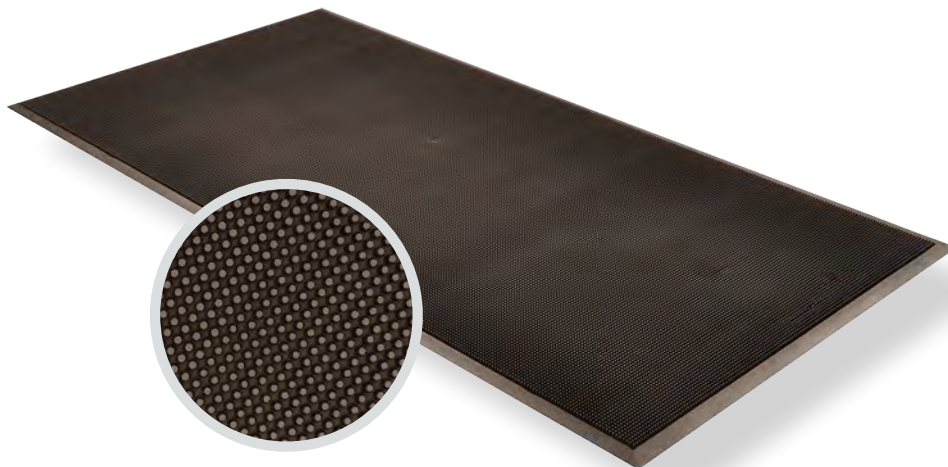
PRODUCT INFORMATION BROCHURE





For over 70 years, the name Notrax® has meant superior quality, service, and innovative products. Now this brand is a cornerstone of Justrite Safety Group, offering the widest selection of products to a variety of markets and applications including entrance mats, anti-fatigue/safety mats, and products designed specifically for use in professional food service environments. Notrax® offers a complete selection of floor matting options to meet any application requirement, quality expectation, and budget.

- **Track record of manufacturing high quality mats for over seventy years**
- **All products are manufactured in ISO certified facilities**
- **Notrax® offers anti-fatigue matting, entrance matting, safety matting, food service matting and specialty mats designed for a variety of industries**



345 - RUBBER BRUSH™ mats are constructed of tough SBR rubber to remain flexible while withstanding extreme cold. Thousands of tough, flexible rubber fingers sweep shoes clean while suction cups on the underside of the mat help to minimize shifting. Due to its durable construction, Rubber Brush™ is the perfect year round outdoor entrance mat for schools, municipal buildings, plant entrances, and office buildings.

Material: Rubber

Features and Benefits:

- Tough natural rubber remains flexible while withstanding extreme cold
- Thousands of flexible rubber fingers sweep shoes clean
- Suction cups on underside help minimize mat movement
- Molded beveled edging on all 4 sides creates a retention dam to trap moisture.
- Recommended product as a part of the **GreenTRAX™** program for "Green Cleaning" environments.



MODEL: 345


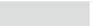
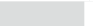


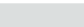



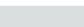


SPECIFICATIONS

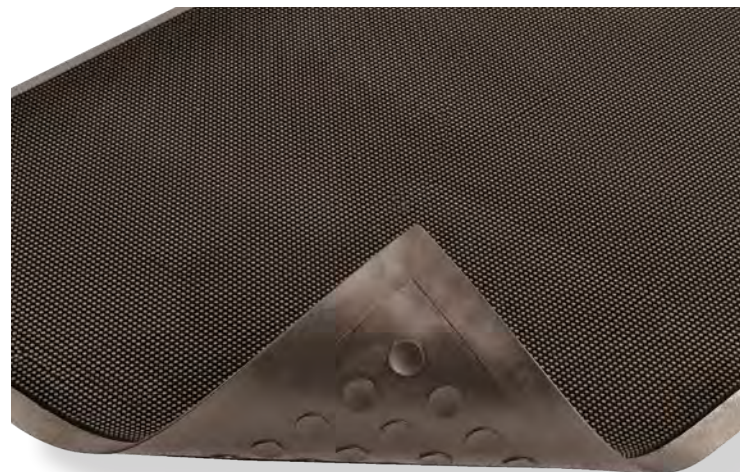
APPLICATIONS

- Schools
- Municipal Buildings
- Plant Entrances
- Office Buildings

Stock Sizes	16"x24", 24"x32", 28"x46", 32"x39", 36"x60", 36"x72"
Thickness	5/8"
Colors	 Black

Performance:

	Good	Better	Best	Superior
Water Retention				
Crush Resistance				
Soil Resistance				



Heavy Traffic



Cleaning



Cold Resistant



Outdoor Use

TESTING DATA

Test	Test Description	Results
ASTM D-3884-01	Abrasion Resistance	0.77 grams (0.7%)
ASTM C1028-96	Static Coefficient of Friction	Wet: 0.36 Dry: 0.43
ASTM D-575	Compression Deflection	@ 25%: 312.5 lbs./in ² @ 50% 591.4 lbs./in ²
ASTM D-1171	Ozone (Method A)	No Noticeable Effect
CPSC FF 1-70 ASTM D-2859	Surface Flammability of Carpets and Rugs Ignition Characteristics - Finished Textile Floor Covering Material	Pass

* Testing performed by an independent test laboratory.

NOTRAX®

5655 West 73rd Street
Chicago, IL 60638

PHONE: (800) 621-2802

FAX: (800) 322-7105

EMAIL: saleschicago@checkers-safety.com

www.notrax.com



A PRODUCT OF:



Justrite Safety Group is the leading source of safety equipment for flammables and hazardous materials storage and handling, asset protection, environmental protection spill containment, absorbents, specialized chemical storage, cable management, safety showers and eye/face washes, matting, and vehicle safety equipment. Learn more at Justrite.com, Checkers-safety.com, and Notrax.com.