

Product Data Sheet for 7301

Product Information

Product Long Code	07301040
Customer Facing Code	7301
Description	WYPALL* L30 Wipers - Large Roll / Blue
PDS Reference	26/09/2013

Product Dimensions

Case Contents 1 Roll x 500 Sheets = 500 Sheets

Dimension			
38.00	x	33.00	Length x Width(cm)



Brand Statements

A limited life wiper using double re-creped (DRC) base sheet technology, layered fabric that's strong, thick and highly absorbent so it cleans up fast without falling apart, does the job with fewer wipers and helps reduce costs. Ideal for: general-purpose, everyday cleaning; soaking up oil and grease; wiping equipment, wet surfaces, hands, face. Available as: a large, perforated roll for use in busy areas. Can be used with a range of mobile or mounted dispensing systems to help control use and reduce wastage.

Bullet Point

- AIRFLEX* highly absorbent' Competitive cost in use
- AIRFLEX* Highly Absorbent Fabric' Strong When Wet
- Made from patented AIRFLEX Bulky feel
- WYPALL* L30 Wipers' Efficient in use
- Made from patented AIRFLEX Fast absorbing
- WYPALL* L30 Wipers' Ideal for wiping away spills

Product Specifications

Roll Type	Large roll	Core Size (cm)	6
Plies	2	Perforated	Yes
Bar Code (Case)	05027375018084	Bar Code (Pack)	5033848003525
Recycled Fibre(%)	100	Virgin Fibre(%)	0
Bleaching Method	Elemental Chlorine Free	Embossing/textured	No
Technology	AIRFLEX*	Country of Origin	GERMANY
Colour	Blue		

Product Data Sheet for 7301

International Standards and Symbols

Solution



Safer Workplace

We know staff safety is your top priority. You can rely on our solutions to protect them, their environment and your important work.



Productive Workplace

The success of your business hinges on your work efficiency. That's why our solutions are designed to help improve your productivity.

Standard R+E



Food Contact Regulations

BFR 36th Recommendation -DE
CH,Food Contact Law-
DE,NL,IT,FR,Lebensmittel- und
Futtermittelgesetzbuch - LFGB

Trade



ISO 14001

ISO 14001 is an international environmental standard. Designed to help organisations ensure that operations comply with environmental laws, and; major environmental risks and liabilities are properly identified, minimised and managed.



ISO 9001

This gives the requirements for quality management systems, is now firmly established as the globally implemented standard for providing assurance about the ability to satisfy quality requirements and to enhance customer satisfaction in supplier-customer relationships.

Packaging

Unit Of Sale	Case	Net Weight(kg)	3
Max Weight(kg)	3.39	Case Dimension (LXWXH)(cm)	27 x 27 x 33
Inner Pack Material	Plastic	Commodity Code	48189090

Pallet Type	LxWxH (m)	Cases per Layer	Layers per Pallet	Cases per Pallet
E3	1.20 x 0.80 x 1.80	13	5	65

Related Products

Product Code	Description	Recommendation
	Fits Dispenser	
6146	KIMBERLY-CLARK PROFESSIONAL* Wall Mounted Wiper Dispenser - Large Roll / Blue	✓
6154	KIMBERLY-CLARK PROFESSIONAL* Floor Stand Wiper Dispenser - Large Roll / Blue	
6155	KIMBERLY-CLARK PROFESSIONAL* Mobile Stand Wiper Dispenser - Large Roll / Blue	

Product Data Sheet for 7301

Batch Code



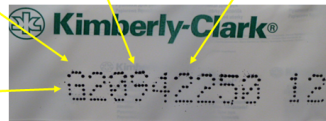
6811



7871



8518



Example: G11232099 10
G = Mill ID - Always 1 letter
1 = Line ID - Always 1 digit
12 = Hour – Always 2 digits
32 = Minutes – Always 2 digits
099 = Day 099 of the year – Always 3 digits
Blank Space
10 = Year – Always 2 digits

Information

It is the employer's responsibility to assess the risk of the task to be undertaken and determine the correct choice of wipers for the task. The manufacturer, Kimberly-Clark, does not accept any responsibility for the incorrect choice or misuse of wipers shown in this brochure. All care has been taken to ensure that the information contained herein is as accurate as possible at the time of publication, however errors may occur and legislation concerning personal protective equipment is under constant review and may change in the lifetime of this brochure. Accordingly, the specifications for the products may be subject to change. We would advise you to contact INFOFAX if you have any queries concerning the products shown or the suitability of such products for the particular task. Always dispose of used protective equipment in a safe and appropriate manner in accordance with European, National and Local environmental regulations

Infofax Details

infofax@kcc.com

Websites

www.kcprofessional.com

Customer Service Number

For more information please contact Customer Service during regular office hours-0870 551 044