



Toilet with vandal-proof cover fixed monoblock to the floor with horizontal/vertical outlet. Stainless steel. Satin finish. Cover: white PVC

Description

- AISI 304 stainless steel monobloc type toilet.
- Floor mounted with horizontal drain with the possibility of vertical installation by means of a technical curve not included.
- Vandal resistant, fully welded and polished construction without sharp edges.
- Suitable for sinks with high frequency of use.
- Ease of cleaning, durability and resistance to oxidation.
- Stainless steel satin finish.
- Also available in gloss finish (NOFER 13016.B).
- Dual flush cistern.
- Includes white PVC lid.

Suggested text for prescription

NOFER monobloc floor-mounted toilet, made of AISI 304 stainless steel with satin finish. Horizontal drainage vertical possibility. Dual flush cistern. Vandal resistant finishes.

Dimensions: 680 height x 370 width x 620 depth (mm).

Drain Ø100 mm.

Components

- AISI 304 stainless steel toilet.
- Dual flush cistern.
- White PVC cover.

Installation

To install with vertical outlet it is necessary to couple a NOFER 13111 technical curve (not included).

Technical characteristics

Material: AISI 304 stainless steel plate

Finishing: Satin

Thickness: 1.2 mm (cistern, enclosure and breast)
2 mm (seat and back plate)

Dimensions: 680 height x 370 width x 620 depth (mm)

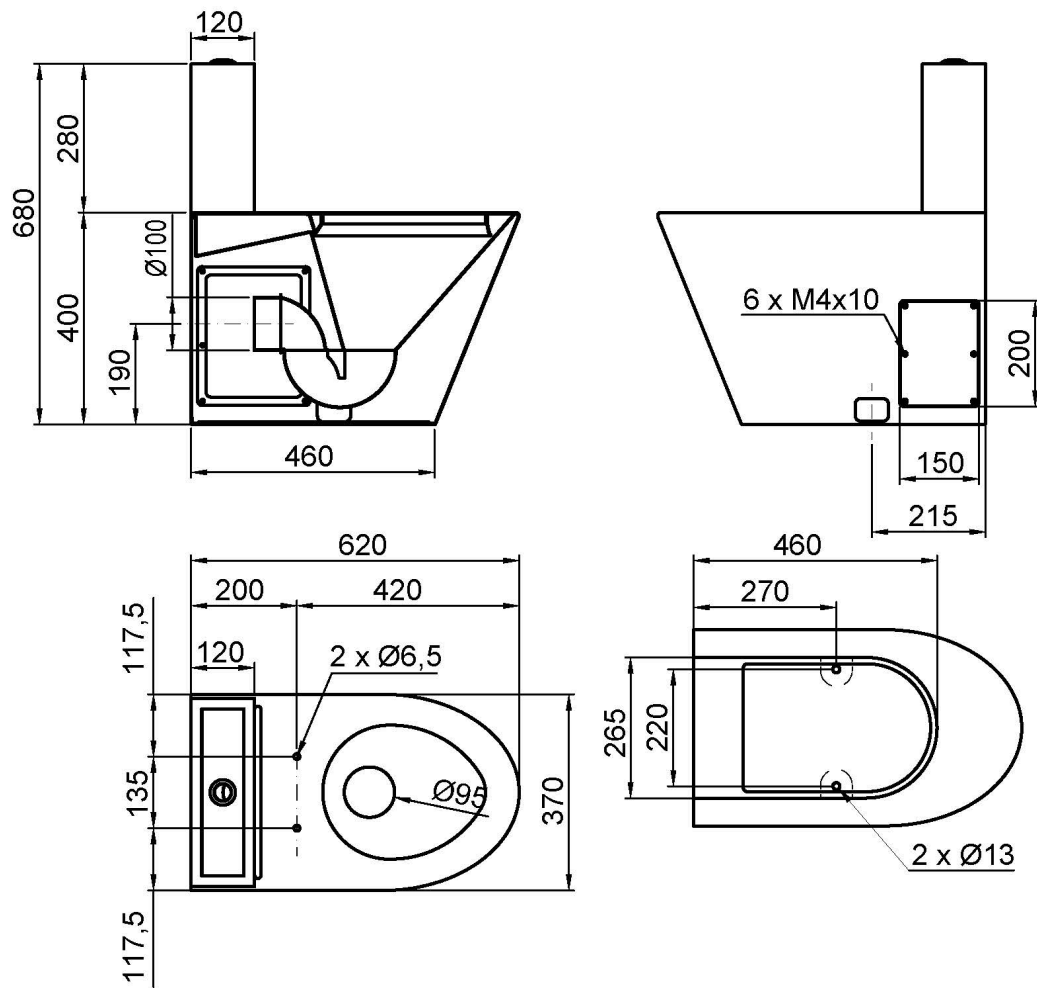
Water inlet connection: 1/2" G male thread

Drain diameter: Ø100 mm

Maintenance

Stainless steel requires maintenance as dirt over time can damage the chromium (Cr) contained in stainless steel. We recommend a monthly cleaning with a specialized product for stainless steel.

Dimensional drawing



Ctra. Laureà Miró, 385-387
08980 | Sant Feliu de Llobregat,
Barcelona - Spain
T. +34 934 742 423
F. +34 934 743 548
nofer@nofer.com
www.nofer.com

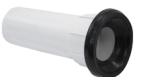
RELATED
PRODUCTS



13016.B



13111.K



13112.K

These specifications may be modified and/or amended due to manufacturing requirements.