



Extra-large stainless steel industrial flush-mount toilet paper dispenser. Satin finish

Descripción

- Wall-mounted toilet paper dispenser.
- Front-loading.
- Durability and corrosion resistance.
- Lock and security key included.
- Satin-finish stainless steel. Also available in gloss finish (NOFER 05006.XL.B), white (NOFER 05006.XL.W) and black finish (NOFER 05006.XL.N).

Suggested text for prescription

NOFER toilet paper dispenser, stainless steel satin finish, for wall mounting. Suitable for industrial roll 250-300 m, with content display, lock and security key. Dimensions: 280 H x 272 W x 115 D (mm).

Components

- Lock and security key included.
- With inertia anti-rotation retainer.

Installation

Wall-mounted installation by means of 3 screws located at the base of the roll holder.

Características técnicas

Material: Stainless steel.
Finishing: Satin.
Dimensions: 280 height x 272 width x 115 depth (mm).
Maximum coil roll: Ø260 mm.
Shaft diameter: Ø40 mm.

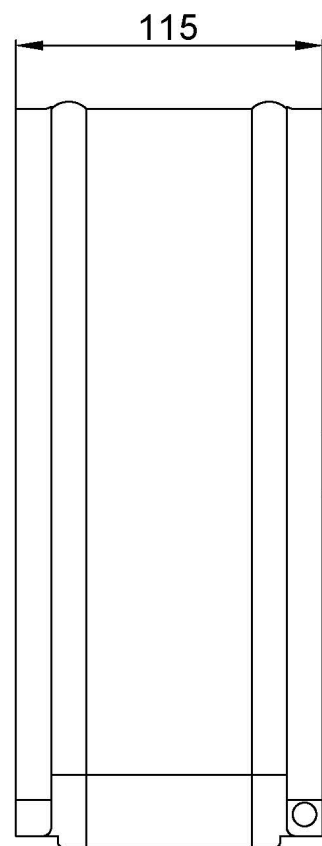
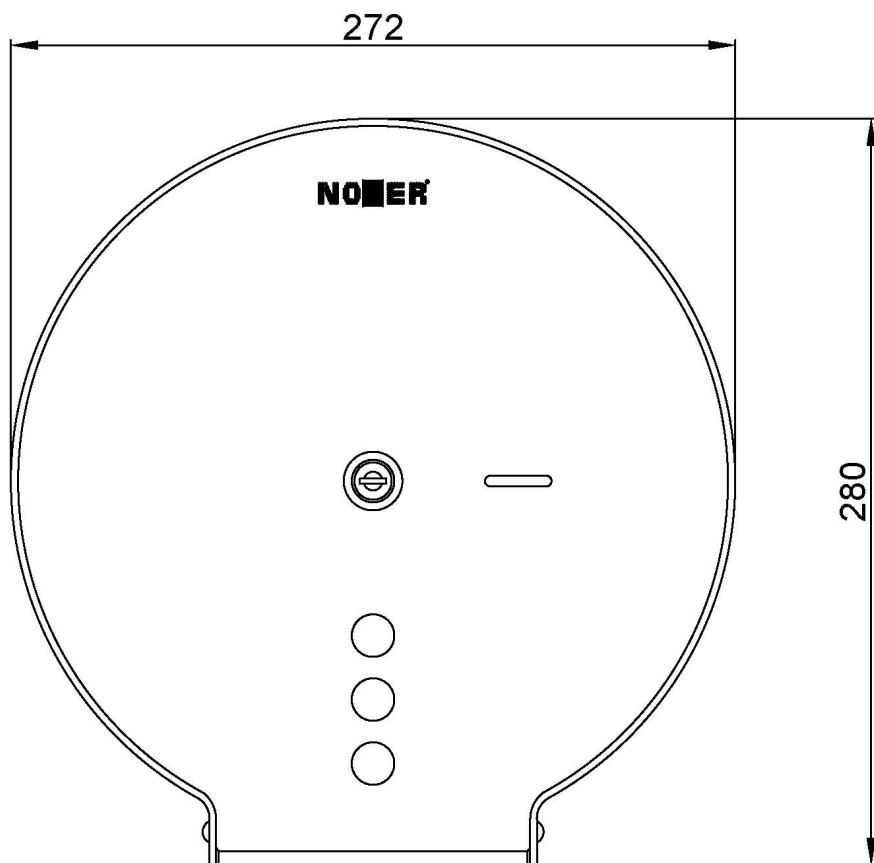
Fijación

Screws included.

Mantenimiento

Mantenimiento: el acero inoxidable requiere mantenimiento ya que la suciedad con el tiempo puede llegar a dañar el cromo (Cr) que contiene el acero inoxidable. Recomendamos una limpieza mensual con un producto especializado para acero inoxidable.

Dimensional drawing



Ctra. Laureà Miró, 385-387
08980 | Sant Feliu de Llobregat,
Barcelona - Spain
T. +34 934 742 423
F. +34 934 743 548
nofer@nofer.com
www.nofer.com

RELATED
PRODUCTS



04008.B



04009.B



05001.B

These specifications may be modified and/or amended due to manufacturing requirements.