

Vandal-proof wall hung toilet with horizontal outlet. Stainless steel. Satin finish



Description

- Bacteriostatic AISI 304 stainless steel wall hung toilet.
- Horizontal drain to wall.
- Vandal resistant, fully welded and polished construction with no sharp edges.
- Suitable for use in correctional facilities.
- Suitable for sinks with high frequency of use.
- Suitable for manually or electronically operated discharge systems.
- Ease of cleaning, durability and resistance to oxidation.
- Satin-finished stainless steel.
- Also available in gloss finish (NOFER 13018.B).

Suggested text for prescription

NOFER wall hung toilet in stainless steel AISI 304 satin finish. Horizontal wall outlet.

Dimensions: 380 H x 355 W x 550 D (mm).

Water inlet Ø31 mm and drain Ø100 mm.

Components

- AISI 304 stainless steel toilet.
- Holes (optional) not included.
- Does not include fixing hardware.

Available

- Optional wood (5000AR) or stainless steel (15029.S) covers available.

Technical characteristics

Material: AISI 304 stainless steel plates

Finishing: Satin

Thickness: Minimum 1 and 2 mm

Dimensions: 380 height x 355 width x 550 depth (mm)

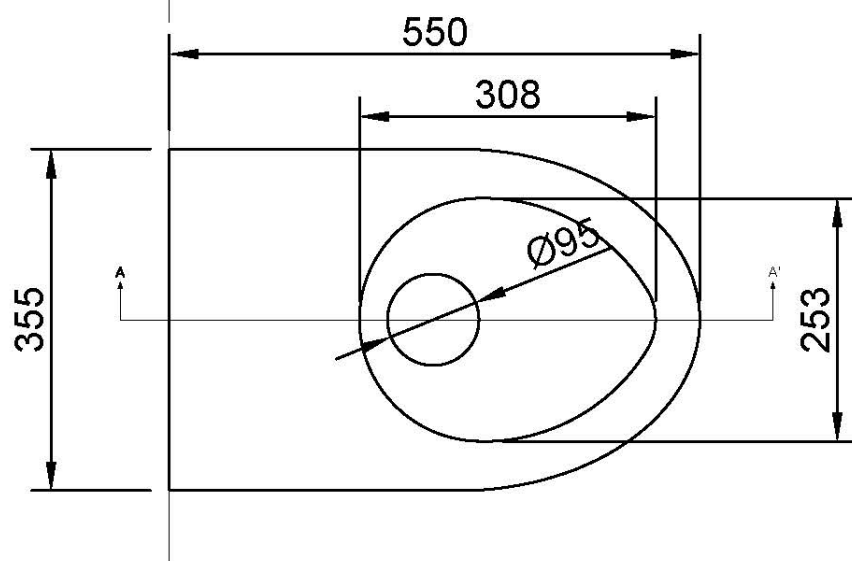
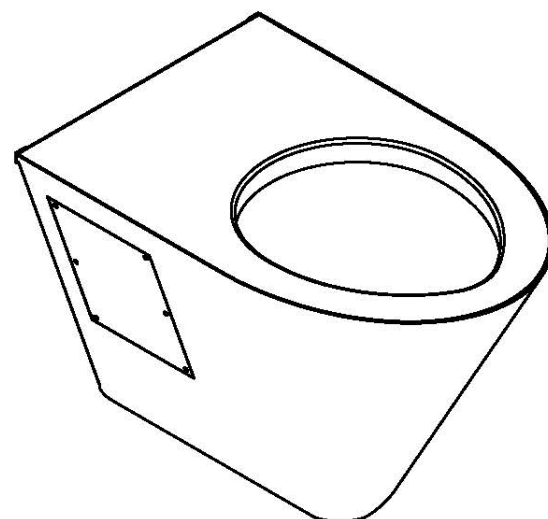
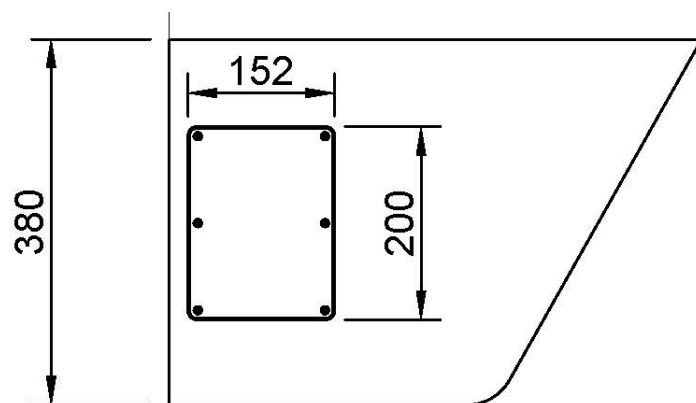
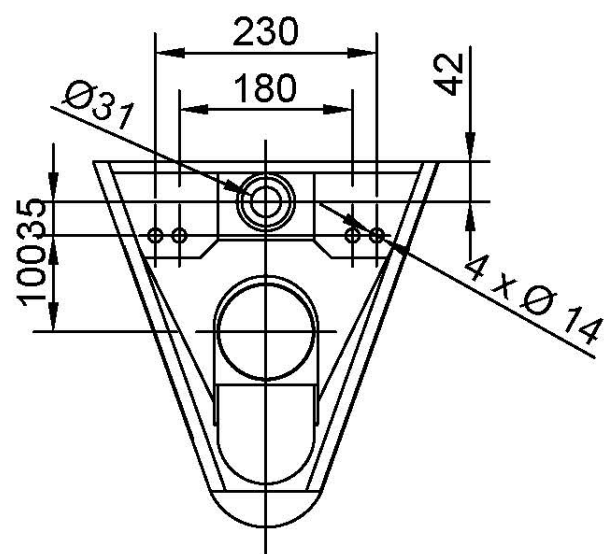
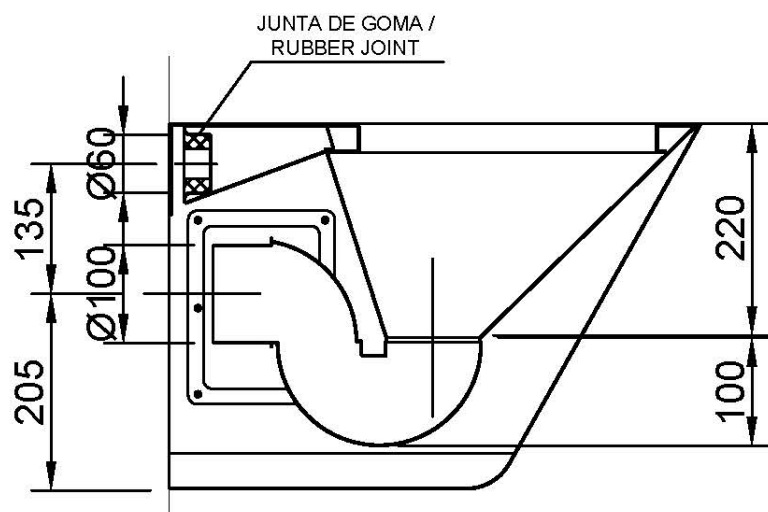
Diameter of water connection: Ø31 mm

Drain diameter: Ø100 mm

Maintenance

Stainless steel requires maintenance as dirt over time can damage the chromium (Cr) contained in stainless steel. We recommend a monthly cleaning with a specialized product for stainless steel.

Dimensional drawing



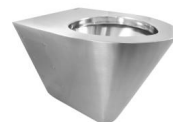


Ctra. Laureà Miró, 385-387
08980 | Sant Feliu de Llobregat,
Barcelona - Spain
T. +34 934 742 423
F. +34 934 743 548
nofer@nofer.com
www.nofer.com

RELATED
PRODUCTS



13011.S



13018.B

These specifications may be modified and/or amended due to manufacturing requirements.